

CURRENT EVIDENCE

Introduction to

OPEN SCIENCE FRAMEWORK (OSF)

CENTER FOR OPEN SCIENCE



Open Science Framework

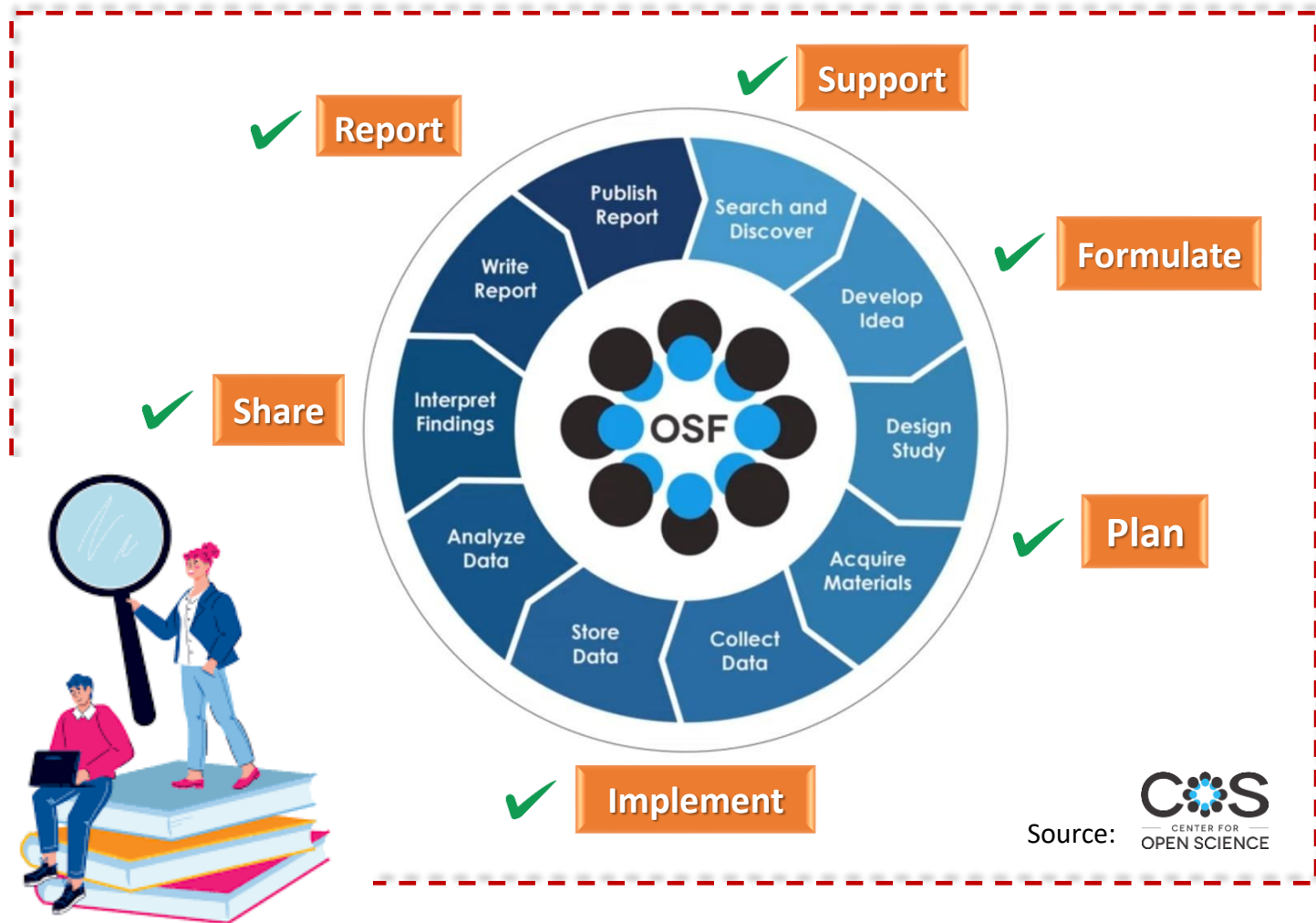


Article by: Nurfaizah Saibul



OSF is a free and open-source project management tool that supports researchers throughout their entire project lifecycle. As a collaboration tool, OSF helps research teams work on projects privately or make the entire project publicly accessible for broad dissemination.

Enables researchers to plan, collect, analyze and share their works transparently throughout the entire research lifecycle.



Source: CENTER FOR OPEN SCIENCE

CURRENT EVIDENCE

Introduction to

OPEN SCIENCE FRAMEWORK (OSF)



OSF tool helps break down **common problems** researchers face at each stage of the research lifecycle.



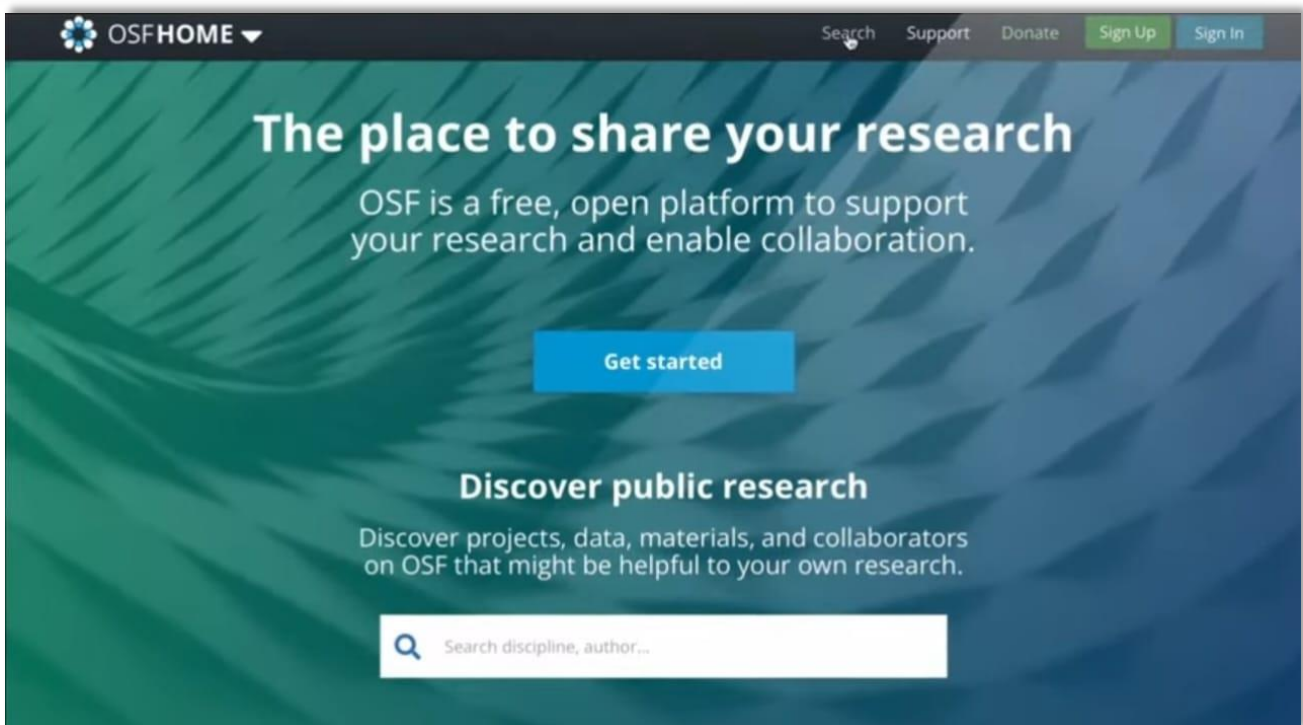
RESEARCH PROBLEM #1

SEARCH AND DEVELOP IDEAS

Evaluate the research landscape



Identify existing research even before finalizing a research idea

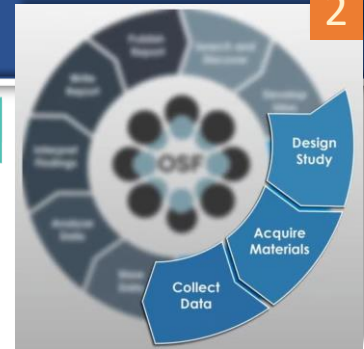


CURRENT EVIDENCE

OPEN SCIENCE FRAMEWORK (OSF)

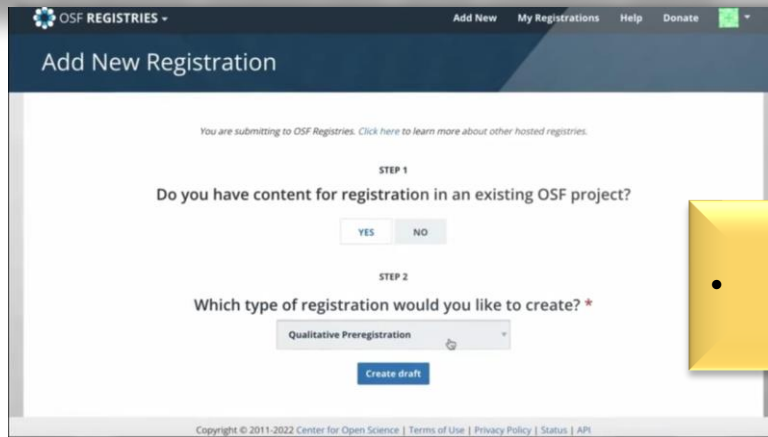


RESEARCH PROBLEM #2



2

Design study, acquire materials and collect data



REGISTRATION

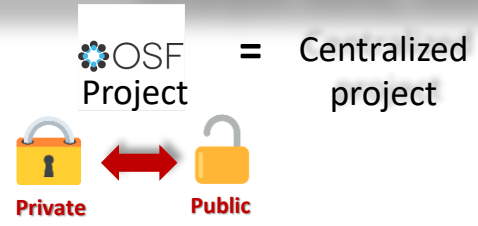
- Transparent documentation
- Future reference



RESEARCH PROBLEM #3

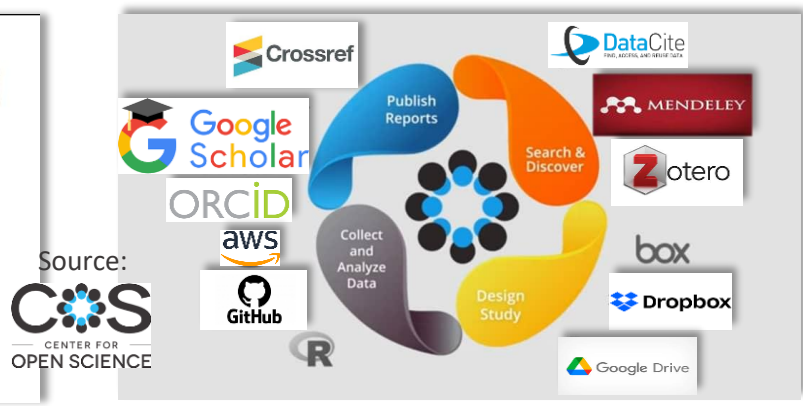
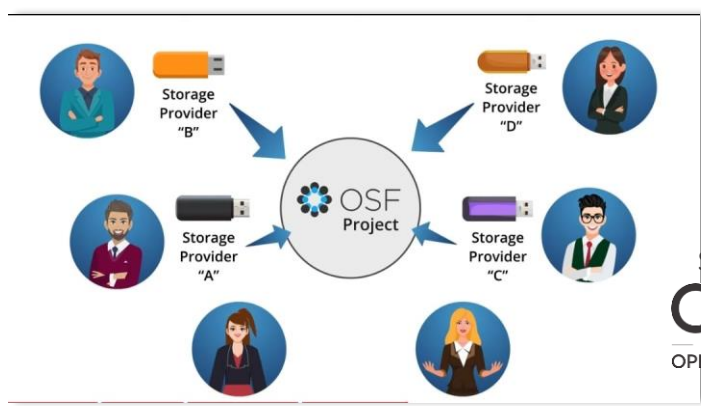


Analyze data, store data and collect data



PROJECT

- Collaborative management
- Store and share materials



CURRENT EVIDENCE

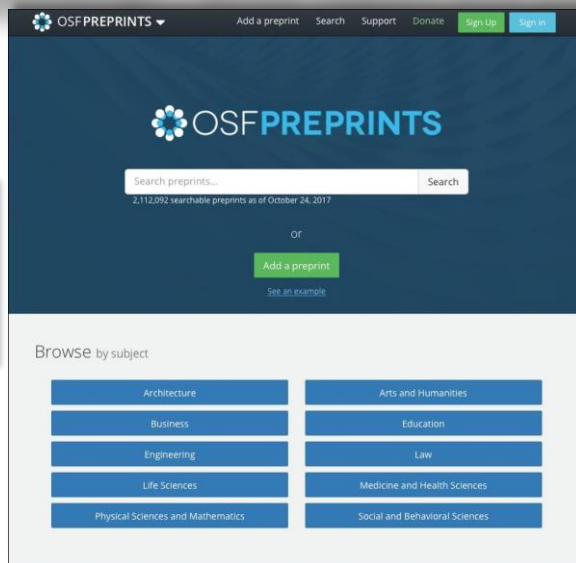
OPEN SCIENCE FRAMEWORK (OSF)



RESEARCH PROBLEM #4

4

Interpret findings , write report and publish report



PREPRINTS

- Present findings to the largest audience
- Quickly share results

5

RESEARCH PROBLEM #5



Publish report, search and discover



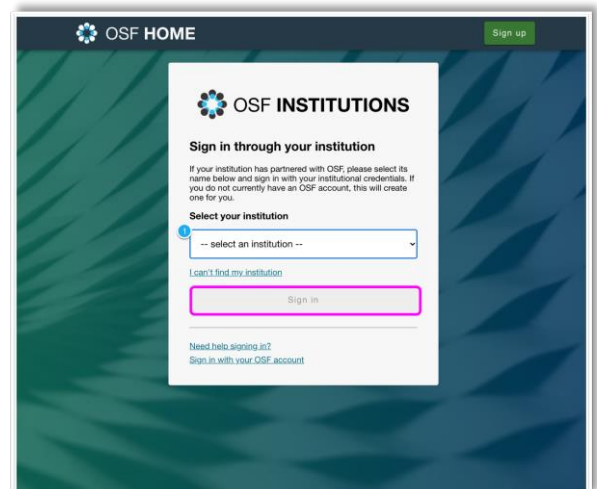
REPORTING

- Required reporting for funded projects
- Institutional research output trading

Funder and Institutional Requirements

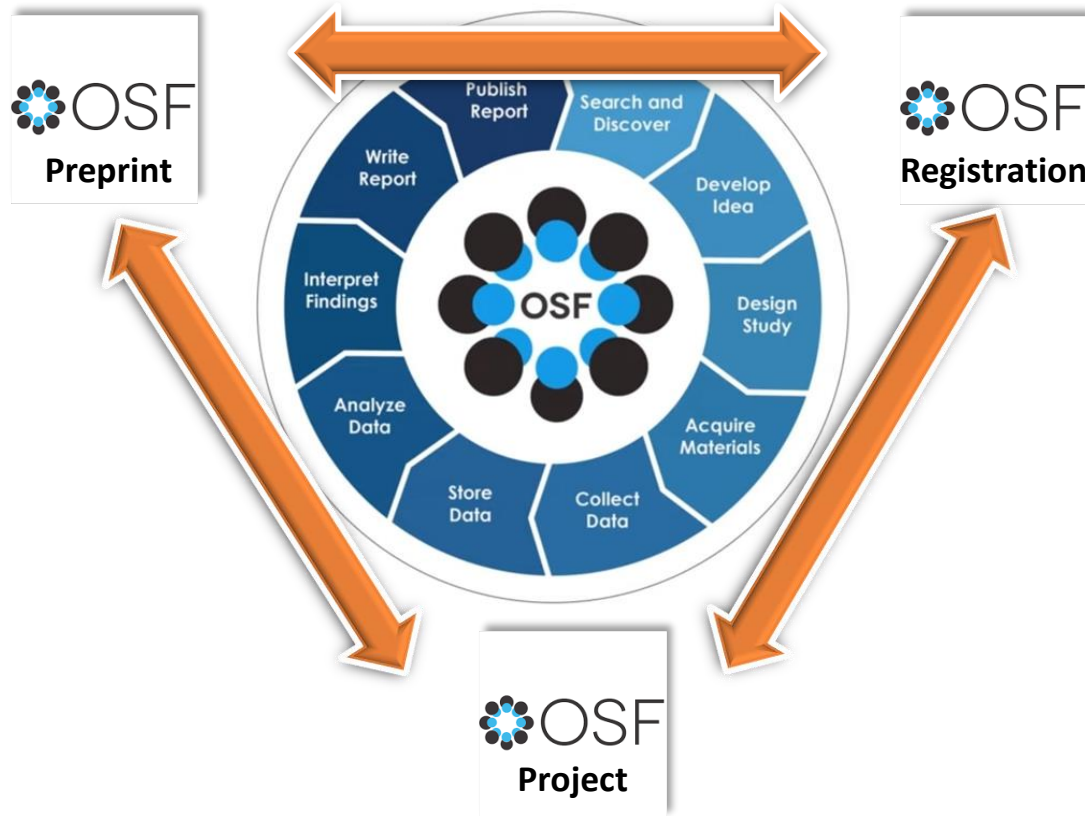
Report Research Activity

- ✓ Openly Available
- ✓ Accessible
- ✓ Persistently Available
- ✓ DOI for Preprints
- ✓ DOI for Registrations
- ✓ DOI for Projects



CURRENT EVIDENCE

OPEN SCIENCE FRAMEWORK (OSF)



RESEARCH PROBLEM #6

6



How can I get help on the OSF?

The screenshot shows the 'OSF SUPPORT' page. On the left is a sidebar with a search bar and a 'CATEGORIES' section containing links for 'Getting Started Home Page', 'First time using the OSF', 'Getting Started For Research Groups', 'OSF Dictionary', and 'Back to OSF Support'. The main content area is titled 'Getting started on the OSF' and includes a 'View In Help Scout' button. Below this is a 'Welcome!' message and a video player for 'An Introduction to OSF'. The video player shows the OSF logo and a play button. A pink arrow points to a speech bubble icon in the bottom right corner of the video player. Below the video is a 'Video Description' starting with 'First time on the Open Science Framework (OSF)? Confused about where to start? Check out the "First time using the OSF" guide below...'. A 'Watch on YouTube' button is also visible.

More information
on OSF:

